



## Bassett Creek Watershed Management Commission

### BCWMC Capital Improvement Program Prioritization Committee

Wednesday, December 5, 2018

8:30 – 10:00 a.m.

Council Conference Room, Golden Valley City Hall

Committee Members: Commissioners Welch, Prom, Harwell, Carlson; Alternate Commissioners Monk, McDonald Black; TAC Members Scharenbroich and Eckman

#### AGENDA:

1. Review/Approve Notes from 11/5/18 Committee Meeting – attached
2. Discuss Revised Ranking Matrix – attached in email

At the last meeting the group reviewed [staff's recommendations](#) to focus CIP projects in four specific geographical areas in the watershed. Due to concerns regarding the desire for more flexibility and a focus on project outcomes, staff was asked to revise the matrix that was briefly discussed at the committee meeting in July for consideration at this meeting and to "score" projects in the Commission's [existing 5-year CIP](#) as a test.

In the meeting materials email you'll find the revised matrix which includes scores for the existing CIP projects as can best be determined with current project information. In some cases, projects in the existing 5-year CIP were too conceptual to be able to appropriately score with the proposed criteria. This weakness should be addressed by the committee.

The matrix now incorporates pollution hot spots, partnerships, and redevelopment as criteria to reflect discussion and desires from the last meeting. The map that was used to determine "pollution hot spots" is attached.

3. Receive Information on Grant Programs

Staff will bring information on the Nine Mile Creek Watershed District Planning Grant and the Mississippi Watershed Management Organization [Grant Program](#) to the meeting.

4. Set next meeting and adjourn

Possible future agenda items: Should CIP maintenance be considered for CIP funding?



## Bassett Creek Watershed Management Commission

### BCWMC Capital Improvement Program Prioritization Committee Meeting Notes

Monday November 5, 2018

8:30 – 10:00 a.m.

Council Conference Room, Golden Valley City Hall

Committee Members Present: Commissioners Welch, Prom, Carlson; Alternate Commissioner Monk; TAC Members Scharenbroich and Eckman; Commission Engineers Chandler and Williams; Administrator Jester

#### AGENDA:

1. Review/Approve Notes from 7/31/18 Committee Meeting – There was consensus that the notes from the July 31<sup>st</sup> meeting were appropriate.
2. Discuss Staff Recommendation Regarding CIP Focus Areas and Scheduling Process

Administrator Jester reviewed a two-step process to determining CIP projects that staff developed based on information and discussions from the last meeting. She noted the first step uses maps and data to find “focus areas” in the watershed that appear in need of best practices due to multiple factors. CIP projects would be sought only from these focus areas. She noted that staff used various maps to delineate four focus areas (described below) for the committee’s consideration.

**Focus area #1:** Tributary to Medicine Lake where modeling indicates it contributes a high pollutant load. This area is also prone to flooding during a 100-year flood event and chloride monitoring indicates a moderate level of chloride concentration from this subwatershed.

**Focus area #2:** Tributary to the impaired Northwood Lake and modeling indicates a high potential for pollutant loading. Chloride monitoring indicates moderate concentrations from this subwatershed.

**Focus area #3:** Close to the creek with moderate pollutant loading potential and slated for redevelopment, plus indication of some flood potential in this area.

**Focus area #4:** Addresses internal pollutant loading within Sweeney Lake through carp management and/or an alum treatment.

Administrator Jester reviewed the second step which involves seeking input from and collaborating with the TAC on possible CIP projects within the focus areas including understanding their ideas and recommendations for projects based on needs and opportunities. She noted this discussion could happen at a collaborative workshop with TAC members and Commissioners.

It was noted that only Golden Valley provided information on possible redevelopment areas so the map doesn’t accurately reflect all the redevelopment opportunities in the watershed. Mr.

Scharenbroich noted that areas slated for possible redevelopment would be better known at the beginning of 2019.

Mr. Eckman noted that the current focus areas aren't the only place where CIP projects could be placed and wondered if the program should offer more flexibility than only finding projects within certain geographical areas. Commissioner Prom agreed that flexibility should be used. However, Commissioner Carlson noted that focusing on certain areas might encourage staff and TAC members to find opportunities that are currently overlooked.

Commissioner Welch added perhaps projects could be sought from the focus areas as a priority but not necessarily implemented in these areas if it doesn't make sense. He noted that the Commission currently uses the "flexibility" option by allowing projects to be anywhere. This committee is charged with finding a way to prioritize the projects rather than "scatter shot" approach that is largely driven by the cities. He wondered how the watershed plan can be used to help prioritize projects and noted that Commissioners need specific connections to the projects. Commissioner Welch also noted that if cities need help gathering information or data in order to help prioritize CIP locations, the Commission should do that work.

Commissioner Prom remarked that the Commission needs to determine its priorities (maybe chloride?) because without them, projects will be chosen with an emotional response. He noted the Commission need clarity, not necessarily agreement.

Commissioner Carlson noted that he wasn't comfortable prioritizing geographic areas but would rather prioritize projects based on project outcomes.

Engineer Williams noted that the focus areas were found by overlaying the Commission's "gatekeeper" questions on the map. The group then reviewed the matrix developed for the July 31<sup>st</sup> meeting. Engineer Williams remarked that a matrix that assigns points or ranking to potential projects can only rank projects that are already known and can't be used to find projects. (It's reactive and doesn't generate ideas.)

Commissioner Welch wondered if a conceptual approach such as "redevelopment areas" could be used rather than specific pre-defined areas on a map.

It was noted that impaired waters are already known, pollutant loading numbers don't change often, and flood prone areas don't change often. So – we already know where the issues are and cities can bring additional information to the table such as redevelopment areas and infrastructure projects.

Alt. Commissioner Monk wondered how we could lump public/infrastructure projects together with private redevelopment projects for an accurate comparison.

Commissioner Welch noted that the Commission should be engaged and integrated with private development and that it would be good to be a partner at the beginning of larger projects.

There was discussion about using fewer, more specific criteria to find focus and clarity rather than using numerous or broad criteria and losing focus. Engineer Chandler suggested the matrix could assign a higher score to projects in high pollutant loading areas (including chlorides).

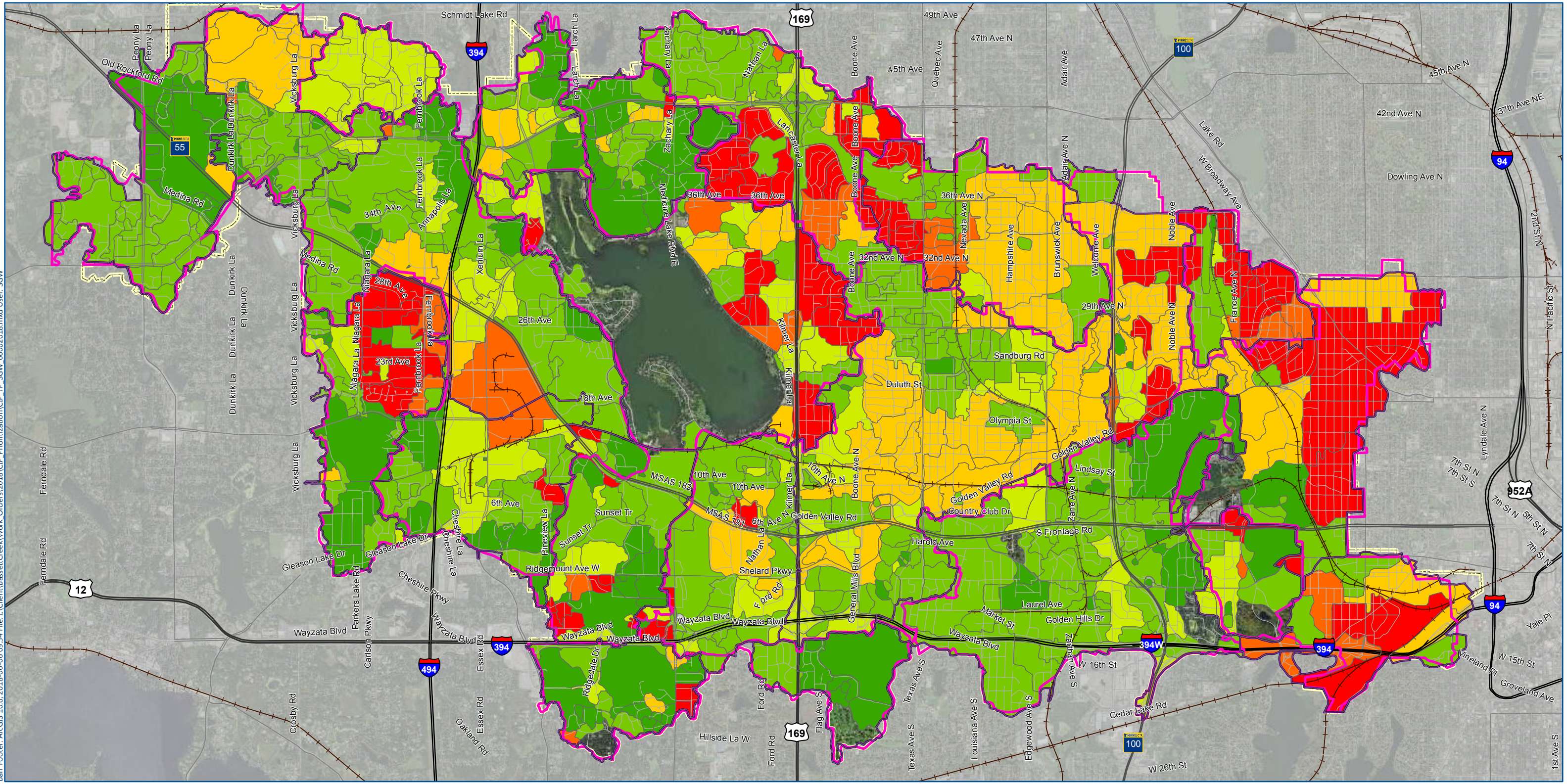
There was a brief discussion on possible grant programs. Mr. Scharenbroich noted that small grant programs don't work and Commissioner Welch noted there may be an even greater disconnection to projects if implemented through a grant program. He did, however, note a successful planning grant program for better property management in the Nine Mile Creek Watershed.

Staff agreed to rework the matrix and add total phosphorus loading; to run existing projects through the matrix; to talk with Nine Mile Creek Watershed District and Mississippi WMO staff about their grant programs; and bring information about levy concerns to the committee.

3. Discuss Starting Opportunity Grant Fund – no discussion other than noted above.
4. Set next meeting and adjourn – The next meeting was set for December 5<sup>th</sup> at 8:30 a.m.



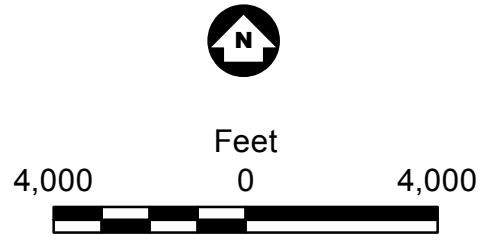
Barr Footer: ArcGIS 10.6, 2018-06-06 09:34 File: I:\Client\BassettCreek\Work\_Orders\2018\CIP\_Prioritization\CIP\_TP\_SGW\_06062018.mxd User: SGW



- BCWMC Political Boundary
- Major Subwatersheds (2015 Plan)
- P8 Major Watersheds (2015)

**Flow weighted total phosphorus (mg/L)**

- < 0.10 mg/L
- 0.10 - 0.15 mg/L
- 0.15 - 0.20 mg/L
- 0.20 - 0.25 mg/L
- 0.25 - 0.30 mg/L
- > 0.30 mg/L



Phosphorus data reflect flow weighted total phosphorus concentrations at subwatershed outlet and include treatment from existing BMPs.

Figure 5  
CIP PRIORITIZATION  
TOTAL PHOSPHORUS LOADING  
FROM P8 MODEL  
Bassett Creek Watershed  
Management Commission