

Honeywell Pond Enhancement/Improvement Project

Item 6C.
BCWMC 10-16-14

Honeywell Pond

NWL: 876.4'
HWL: 884.2'
Pond Surface area = 1.5 acres

Legend

- Wetland Boundary
- 2-foot Interval
- 10-foot Index
- Storm Sewer

**Easements Area
E.dwg Polyline**

Cad Renderer

- Temporary Easment
- Permanent Easement
- Parcel

1 inch = 60 feet

0 50 100 Feet

Figure 1 - Existing Conditions

Honeywell Pond Enhancement/Improvement Project

Direct Drainage Area Tributary
to Honeywell Pond - 105 acres

Honeywell Pond

Legend

- Existing Drainage Area Direct
- Wetland Boundary
- Storm Sewer

Soils

- A
- B
- C
- D

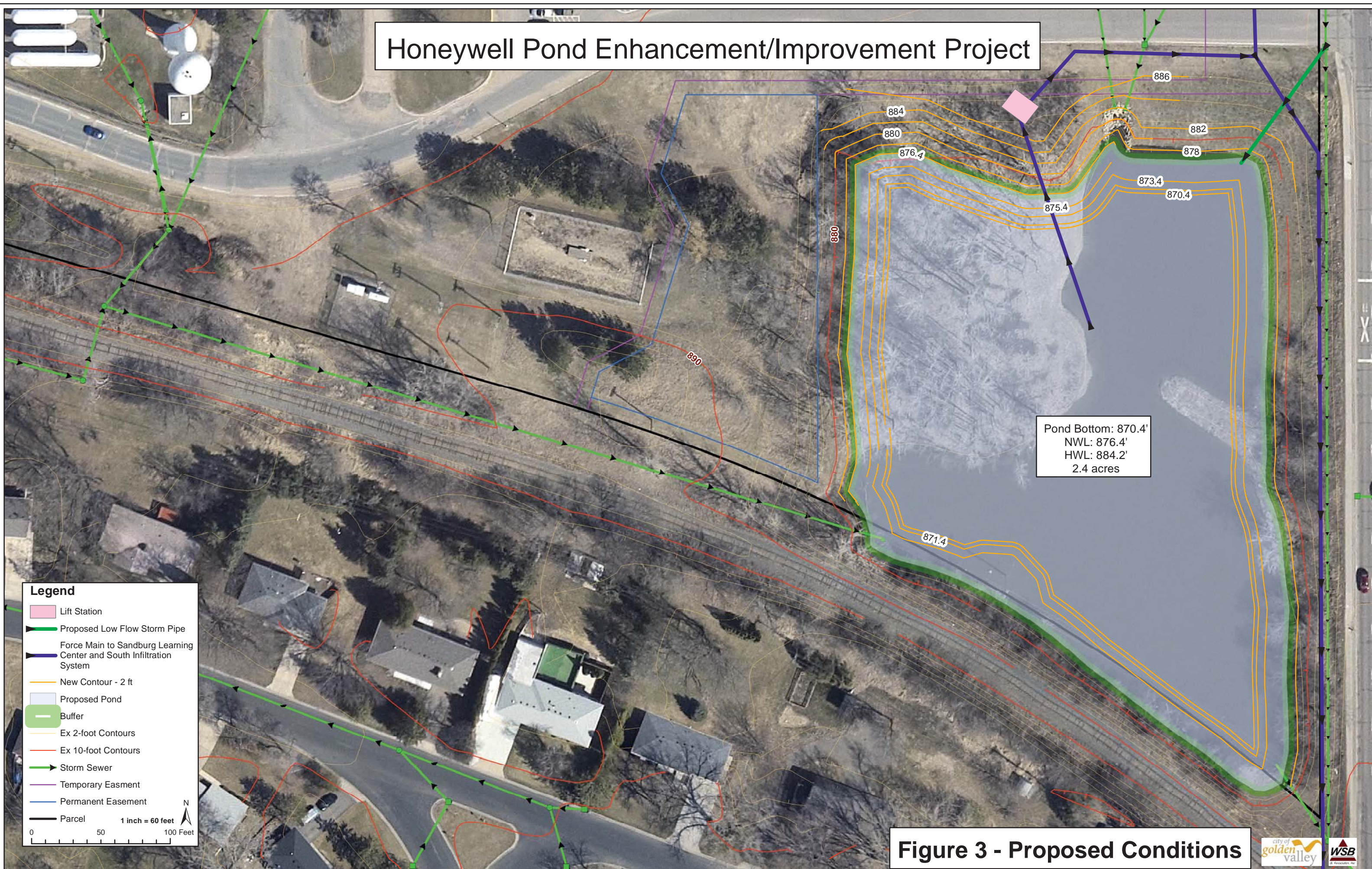
1 inch = 300 feet

0 150 300 Feet

N

Figure 2 - Hydrologic Soil Group Map for Area Directly Tributary to Honeywell Pond

Honeywell Pond Enhancement/Improvement Project



Legend

- Lift Station
- Proposed Low Flow Storm Pipe
- Force Main to Sandburg Learning Center and South Infiltration System
- New Contour - 2 ft
- Proposed Pond
- Buffer
- Ex 2-foot Contours
- Ex 10-foot Contours
- Storm Sewer
- Temporary Easement
- Permanent Easement
- Parcel

1 inch = 60 feet

0 50 100 Feet

N

Figure 3 - Proposed Conditions

Honeywell Pond Enhancement/Improvement Project

14 300x5 foot trenches
20 foot spacing between pipes
Total infiltration surface area
of 21,000 square feet

Legend



- Pump to Sandburg Learning Center Baseball Field
- Storm Sewer
- Irrigation Area: 14 acres

1 inch = 90 feet
0 75 150 Feet


Figure 4 - Sandburg Learning Center Baseball Field Irrigation Area

Honeywell Pond Enhancement/Improvement Project

Legend

-  Pump to North Ball Fields
-  Irrigation Area - 14.5 acres

1 inch = 200 feet



0 200 400 Feet

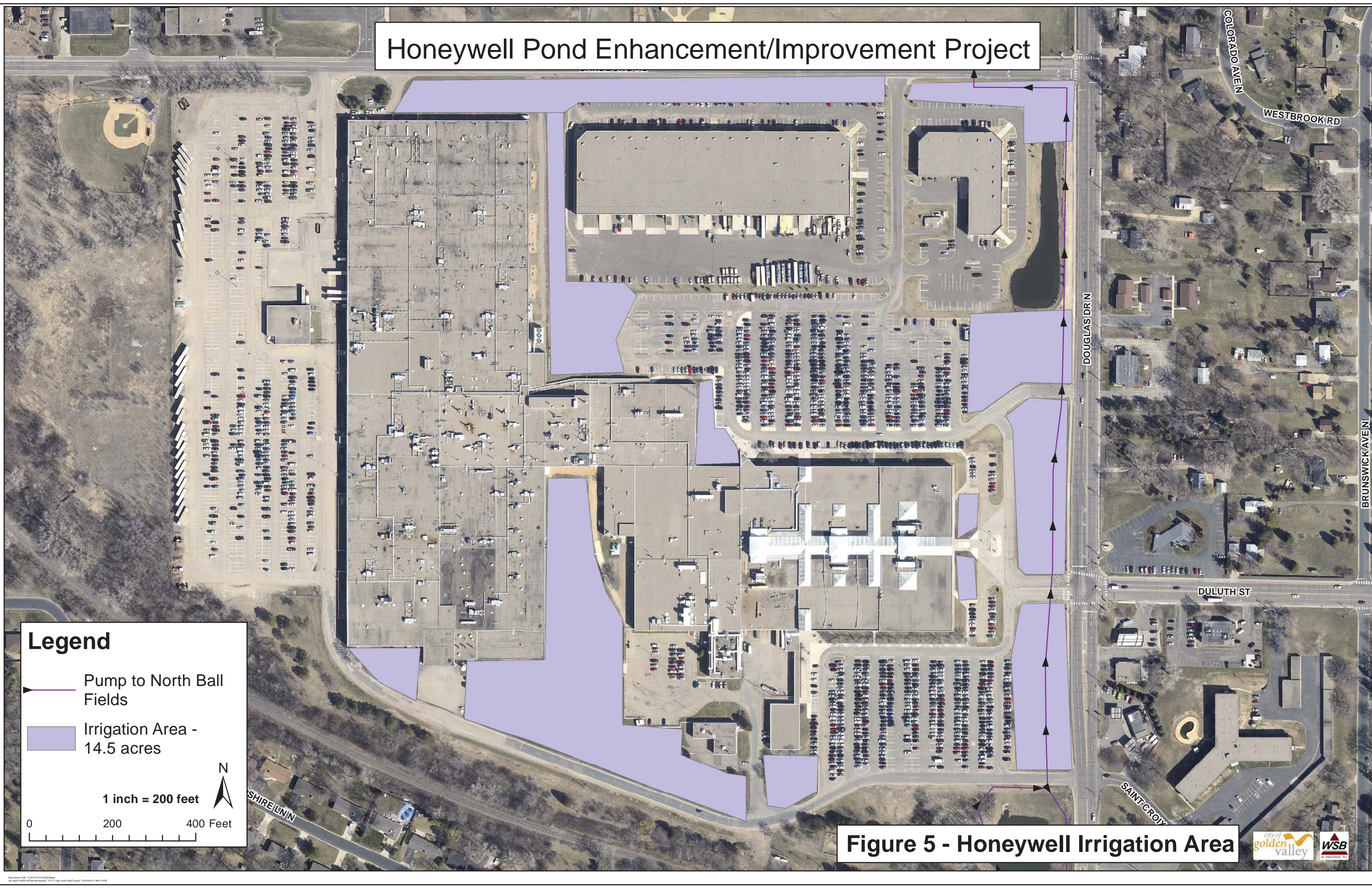


Figure 5 - Honeywell Irrigation Area

Honeywell Pond Enhancement/Improvement Project

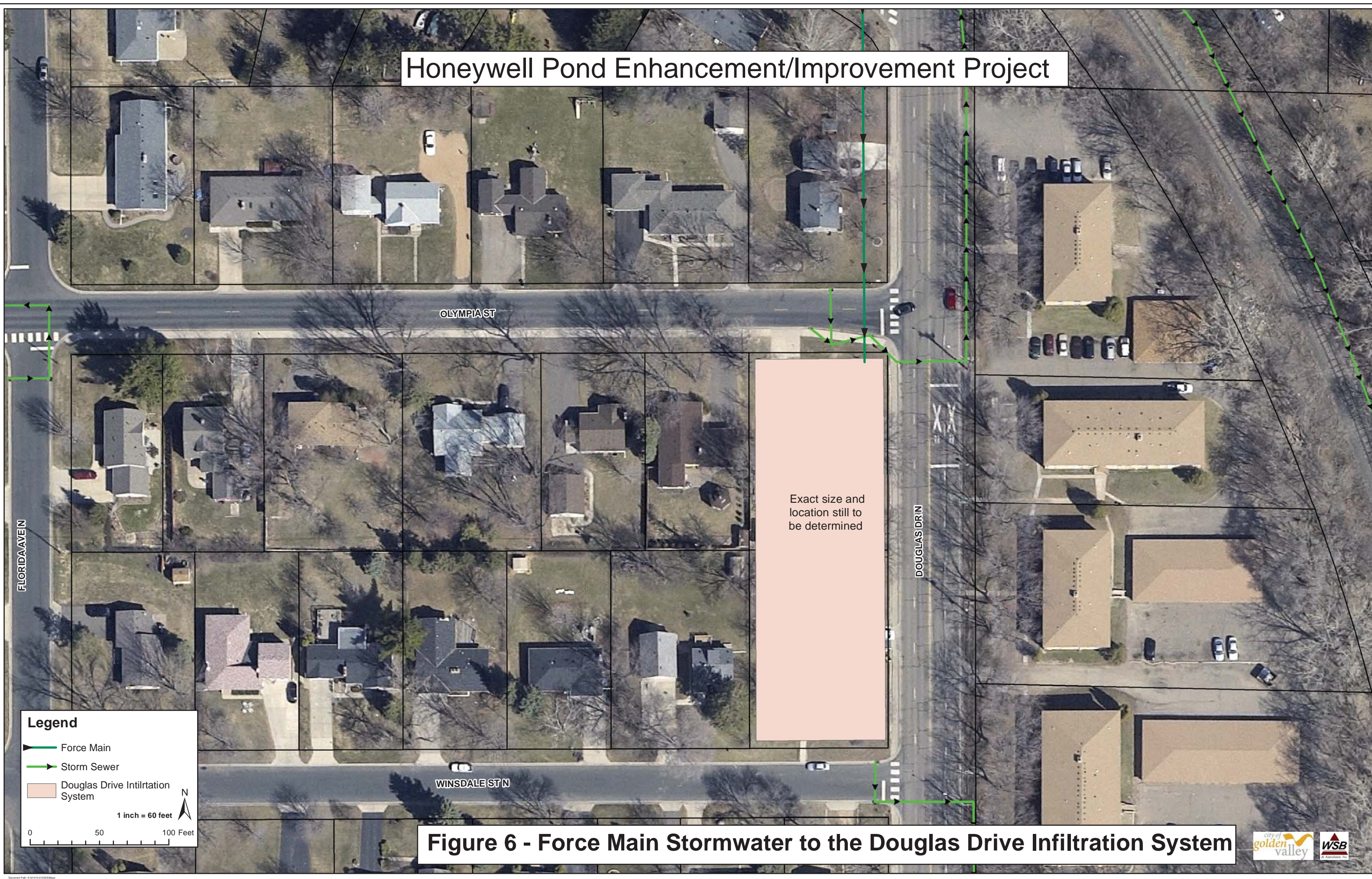


Figure 6 - Force Main Stormwater to the Douglas Drive Infiltration System